



GeoPrinter

Photographic Quality Thermal Printer

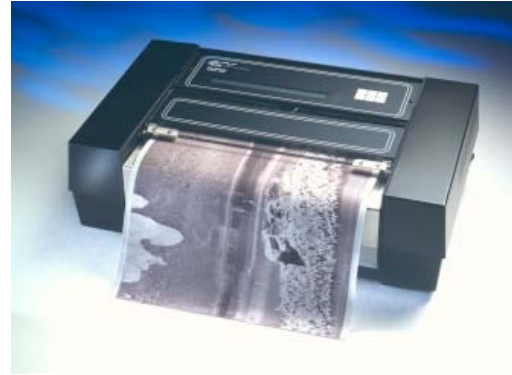
Introduction

The GeoPrinter Continuous Tone Thermal Printer, Model 9315CTP, is a highly reliable, all-purpose image printer that provides fast, high quality photographic images. Images are recorded on a choice of thermal fibre-based paper, or plastic-based transparent film. The printed images are 25.6 cm (10.1 inches) in width by any length up to 45.7 m (150 ft) and feature 256 shades of grey per pixel and a resolution of 2048 pixels per line.

The GeoPrinter is well suited for a wide range of applications where low cost, photographic quality images are required. Typical applications include undersea research such as sub-bottom profiling, medical scanning such as arteriograms, industrial scanning electron microscopy, aerial reconnaissance and satellite photos. Images are printed in less than a minute. The jitter free operation and the precise positioning of each dot guarantees that each image is sharp and clearly defined. GeoPrinter is available with Parallel and SCSI computer Interfaces.

Applications

- Sonar profiling
- Medical scanning
- Satellite photos
- Scanning microscopy
- High quality photo facsimile
- Aerial reconnaissance
- Weather imaging
- Ultrasound
- X-Ray
- Spectrum analysis
- Surveillance
- Infrared imagery
- Synthetic aperture radar imagery



User Friendly and Reliable

The GeoPrinter Continuous Tone Thermal Printer is designed for high reliability and minimum operator attention. The thermal print head technology eliminates the need for replacing messy ink cartridges, worn ribbons or refilling toner canisters. With the exception of the paper feed assembly and cooling fans, there are no moving parts.

A liquid crystal display shows the printer status at all times. A convenient top mounted keypad allows quick access to operator settable parameters such as the selection of fibre or plastic recording paper. A built-in set of diagnostic test patterns are operator selectable from the front panel to provide quick verification of operation.

Features

- Large 25.6 cm (10.1 in.) printing width
- 256 Grey shades per pixel
- 2048 Pixels per line
- Fibre or plastic imaging media
- Low maintenance, reliable operation
- Multiple interfaces available
- Multiple Drivers available

Specifications

Data Input:

Parallel and SCSI

Buffer Memory:

1 MB RAM standard
2, 4, 5 or 8 MB RAM optional

Data Format:

8 bits/pixel in 256 grey shade mode
1 bit/pixel in B/W mode

Printout:

Paper Width: 26.9 cm (10.6 in.)
Printing Width: 25.6 cm (10.08 in.)
Paper Length:
 Fibre: 45.7 m (150 ft.)
 Plastic: 38.1 m (125 ft.)
 Transparency: 30.5 m (100 ft.)
Printing Length: Limited only by paper length
Pixels per Line: 2048
Pixel Density: 8 dots/mm (203 pixels per inch)
Line Resolution: 8 lines per mm (203 lines per inch max.)
Printing Speed: 100 lines per second (B/W)
 25 lines per second (256 grey shades)

Physical:

Dimensions: 44.5 cm (17.5 in.) W x
 27.3 cm (10.75 in.) D x
 14 cm (5.5 in.) H
Weight: 9.1 kg (20 lbs.)

Input voltage: 115/230 VAC \pm 10%

Power: 40w standby;
50w operating

Reliability:

MTBF: Greater than 20,000 hours
MTTR: 30 minutes

Environmental:

Operating Temp: 10° to 40°C (50° to 104°F)
Post ½ hr Warm up: 0° to 40°C (32° to 104°F)
Storage Temp: -20° to 60°C (-4° to 140°F)

Humidity: 10% to 90% RH non condensing
Operating Altitude: Sea level to 3000 m (10,000 ft.)

Consumables:**Paper:**

Type: Thermal sensitive, fibre base, medium resolution
Length: 45.7 m (150 ft)
Width: 26.9 cm (10.6 in)
Part No.: TP 10615

Type: Thermal sensitive, plastic base, high resolution
Length: 38.1 m (125 ft)
Width: 26.9 cm (10.6 in)
Part No.: PTP 1061

Replacement Print Head Kit:

Part No: 9358-K5-xxx.
Note: Replace xxx with Model Number, e.g. 985

*Specification subject to change without notice.
(9-GeoPrinter-6900/A 11/2007)*



GeoAcoustics Asia Pacific Pte Ltd
30 Loyang Way, #07-12,
Singapore 508769
Tel: +65 6546 3687
Fax: +65 6546 3690
e-mail: singapore.sales@geoacoustics.com
www.geoacoustics.com



GeoAcoustics Limited
Shuttleworth Close, Gapton Hall Ind. Est.,
Gt. Yarmouth, Norfolk, UK, NR31 0NQ
Tel: +44 (0) 1493 600666
Fax: +44 (0) 1493 651100
e-mail: uk.sales@geoacoustics.com
www.geoacoustics.com



GeoAcoustics Inc
12626 William Dowdell Drive
Cypress, Texas 77429, USA
Tel: +1 281 894 5570
Fax: +1 281 894 7196
e-mail: us.sales@geoacoustics.com
www.geoacoustics.com